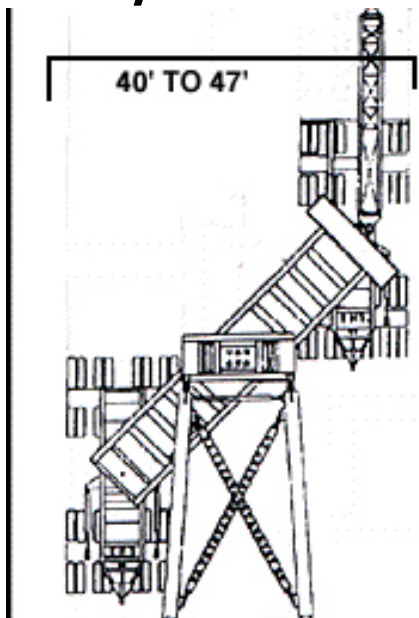
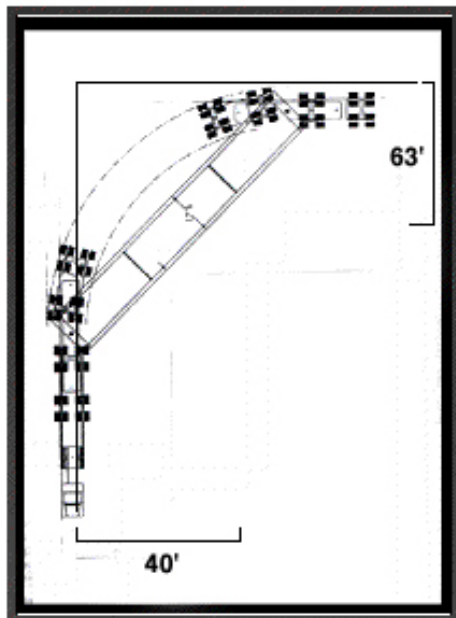


## S-32/400 ton trail king



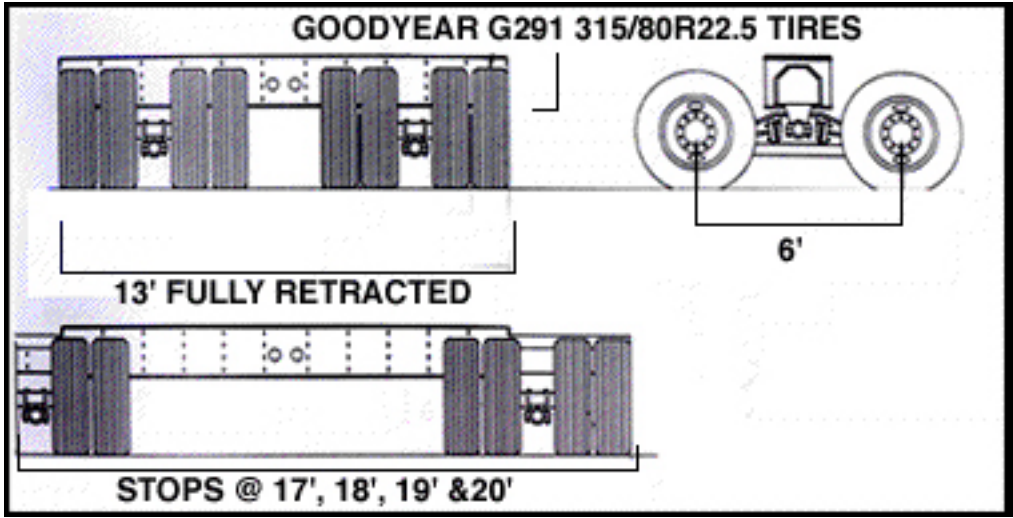
### CRABBING

This transporter can literally go from 13' in width (suspension) to 47' in width on the roll, and under load. The steering is controlled by individuals standing on both the front and rear bunkers. This option is beneficial on longer span structures.

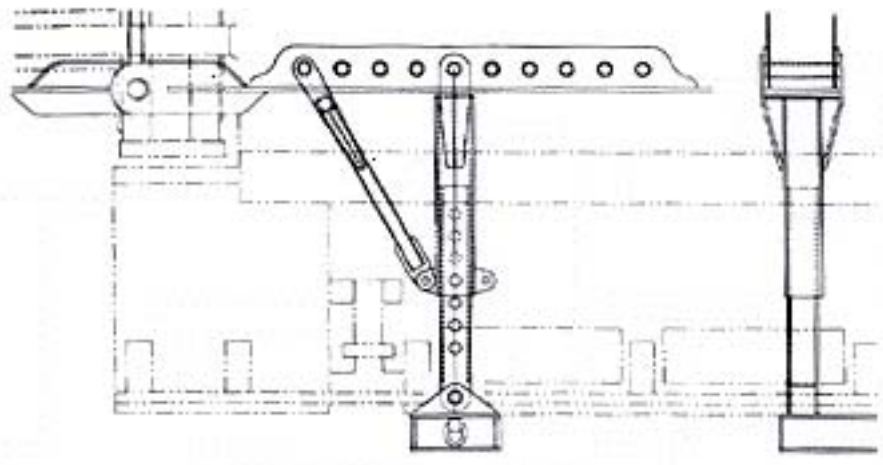


### TURNNING

The actual turning radius for the trailer is 55'6". The diagram shows a situation of differing road widths. One benefit the S-32 has is the 50" jacking towers on each end of the trailer. This would allow us to raise the load over corner barriers such as fire hydrants, guard rails, etc. This would allow the transporter to make turns where lesser road widths are available.



This capability allows the width of the axles to go from 13' to 20' hydraulically under load and on the roll. The width can be pinned at 6" intervals so as to allow the most beneficial load bearing on a particular structure. In situations where the decking on a structure is questionable, this capability will allow more direct loading. This option is unprecedented in a trailer of this magnitude. The trailer has a trunion type suspension to assure equivalent loading on the tires.



The load suspension system is designed to have multiple adjustments for the height and length of the load. The beams themselves are a low 10" to keep the increased height factor to a minimum.

**Tractor Weight (250) 87,150lbs.**  
**Trailer Weight 357,600lbs.**  
**Total Dimensions of Transport: 219'X**  
**17'6"X14'6"**

